






**9. Características técnicas**

- Freqüência de rádio: 433.92 MHz
- Potência max de radiofreqüência: <20mW (EIRP)
- Distância de transmissão: 300 m (campo aberto)
- Nível sonoro ajustável: 80 dB
- Escolha entre 36 melodias
- Flash LED luminoso

**Reciclagem**

Este produto deve ser passado pelo tratamento conforme à norma 2002/96/ES para ser reciclado ou desmontado de maneira que a sua inuância no meio ambiente seja mínima. As autoridades locais ou regionais prestam mais informações detalhadas.

 Utilização em espaço interior.

**Support**  
www.chacon.com/support

**EN**

**Registering your warranty**

To register your warranty, fill in the online form at [www.chacon.com/warranty](http://www.chacon.com/warranty)

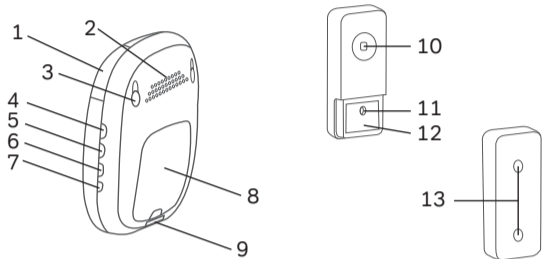
**0.Introduction**

Thank you for using this product.

- Please read the instructions carefully before using the device.
- Do not attempt to dismantle or repair the product yourself as it will invalidate the warranty.

**1. Introduction to the product**

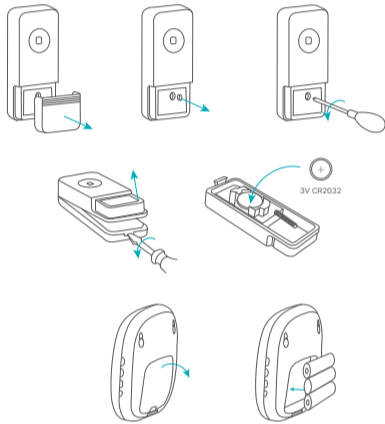
- 1 LED indicator
- 2 Speaker
- 3 Hanging hole
- 4 Volume
- 5 Tune
- 6 Sound and flashing mode
- 7 Learning code button
- 8 Battery cover
- 9 Coin slot
- 10 Pushbutton
- 11 Silicone plug
- 12 Name plate
- 13 Screw location



**1.1. Installing the battery (push button)**

1. Remove the cover located above the name plate.
2. Use pliers to remove the silicone plug
3. Use a Phillips screwdriver to loosen the screw.
- 4 / 5. Use a flat screwdriver to open the device.
6. Insert the CR2032 3 V battery (included)
7. Check that the gasket is correctly positioned before closing the unit.

NOTE: When you insert the battery, take care to observe correct polarity (+/-) without damaging the battery.



**1.2. Installing the battery (chime)**

1. Remove the cover on the battery.
2. Insert 3 x 1.5 V AA batteries (not provided) in the battery compartment, checking the polarity is correct (+/-).

**1.3. Wall-mounting**

**1.3.1. Outdoor unit (push button)**

Open the transmitter using a flat screwdriver and separate the front and back sections. Then, fix the rear section to an appropriate height on the wall using the two screws provided.

- V1** TIP: For the installation, you will need a drill and a Phillips screwdriver.
- IMPORTANT: Before drilling a hole in the wall, make sure that there are no cables or pipes that you could accidentally damage.

- V2** You can stick the transmitter at an appropriate height using double-sided adhesive tape (provided)
- NOTE: If you mount your push-button to a surface made of uPVC (polyvinyl chloride) or metal, please note that the transmission range will be reduced.

**1.3.2. Interior unit (chime)**

1. Drill two holes in the wall at the desired height.
2. Then insert two wall plugs (provided) into the holes.
3. Then, insert two screws (provided) into the wall plugs.
4. You can then hook up the receiver.

NOTE: The screws must not be completely inserted into the wall. You must retain sufficient length from the surface to hold the receiver (chime).

IMPORTANT: The holes have a diameter of approx. 6 mm. The distance between the two holes must be around 75 mm.

**2. Use of the product**

Once you have fitted the batteries to both units, there are just a few more steps before your new doorbell is working.

1. Hold the automatic learning code button for about three seconds, until you hear a beep.
2. Within 15 seconds, press the pushbutton to synchronise the two devices.
3. The units are now synchronised. You can now choose the tune of your choice using the tune button (see diagram).
4. You can adjust the volume of your receiver (chime) using the volume button (see diagram).

- Note:
- If you hear 2 beeps, the connection has not been established in time. You need to start again at step 1.
  - If you wish to add multiple receivers (chimes), you need to repeat the process from step 1.
  - If you hear the doorbell ringing for no reason, this could be caused by interference from other doorbells in the vicinity. If this happens, apply the same reset procedure (See Section 6: Resetting the unit).

**3. Choose the mode which suits you**

Use the "sound and flash mode" button on the side of the receiver (chime) to adapt the mode to your requirements. There are 3 options to choose from:

- Sound only: a beep sounds but the LED does not light up
- LED flash only: the LED flashes but no beep sounds
- Sound and flash: a beep sounds and the LED lights up

**4. Low battery indicator**

If the receiver battery is low, the LED flashes to indicate that the batteries need changing.

**5. Adding a second transmitter**

1. Press the learning code button on the chime once
2. Then press the transmitter button (pushbutton)
3. The receiver (chime) makes a noise to indicate that the new code has been saved.

**6. Resetting the unit**

If you want to disconnect the two devices, hold down the Learning Code button for about 5 seconds. The chime will emit 5 "beeps" to signal desynchronization.

NOTE: Do the same to remove interference due to possible chimes in the area. However, you will need to reconstruct the synchronization between the receiver and the transmitter in accordance with Chapter 2 above: Use of the product.

**7. The receiver (chime) does not ring**

1. Check for discharged batteries in the transmitter or receiver.
2. Check that the batteries are inserted in each unit with the correct polarity.
3. Check that the two units are not too far apart. Bring them as close to each other as possible, making sure that they remain within the operating range (300 m free field).

**8. Safety tips / user tips**

- The receiver is designed for indoor use only
- Do not install the transmitter on a metal surface or UPVC door frames, because that would shorten their operating range.
- Do not expose the units to high temperatures.
- Do not immerse the units in water.
- If you do not plan to use the unit for an extended period, such as when you are on holiday, please remove the battery from the transmitter.
- Incorrect use of the battery could damage nearby items and cause a fire or serious injuries.
- Keep the batteries away from children.
- Recycle used batteries in line with environmental protection regulations.

**9. Características técnicas**

- Radio frequency: 433.92 MHz
- Max radio-frequency power: <20mW (EIRP)
- Transmission range: 300 m (free field)
- Adjustable volume: 80 dB
- Choice of 36 tunes
- Flashing LED

**Recycling**

Don't throw batteries or out of order products with the household waste (garbage). The dangerous substances that they are likely to include may harm health or the environment. Make your retailer take back these products or use the selective collect of garbage proposed by your city.

 For indoor use only

**Support**  
www.chacon.com/support

**EN**

**Registering your warranty**

To register your warranty, fill in the online form at [www.chacon.com/warranty](http://www.chacon.com/warranty)

**0.Introduction**

Thank you for using this product.

- Please read the instructions carefully before using the device.
- Do not attempt to dismantle or repair the product yourself as it will invalidate the warranty.

**1. Introduction to the product**

- 1 LED indicator
- 2 Speaker
- 3 Hanging hole
- 4 Volume
- 5 Tune
- 6 Sound and flashing mode
- 7 Learning code button
- 8 Battery cover
- 9 Coin slot
- 10 Pushbutton
- 11 Silicone plug
- 12 Name plate
- 13 Screw location

**1.1. Installing the battery (push button)**

1. Remove the cover located above the name plate.
2. Use pliers to remove the silicone plug
3. Use a Phillips screwdriver to loosen the screw.
- 4 / 5. Use a flat screwdriver to open the device.
6. Insert the CR2032 3 V battery (included)
7. Check that the gasket is correctly positioned before closing the unit.

NOTE: When you insert the battery, take care to observe correct polarity (+/-) without damaging the battery.

**1.2. Installing the battery (chime)**

1. Remove the cover on the battery.
2. Insert 3 x 1.5 V AA batteries (not provided) in the battery compartment, checking the polarity is correct (+/-).

**1.3. Wall-mounting**

**1.3.1. Outdoor unit (push button)**

Open the transmitter using a flat screwdriver and separate the front and back sections. Then, fix the rear section to an appropriate height on the wall using the two screws provided.

- V1** TIP: For the installation, you will need a drill and a Phillips screwdriver.
- IMPORTANT: Before drilling a hole in the wall, make sure that there are no cables or pipes that you could accidentally damage.

- V2** You can stick the transmitter at an appropriate height using double-sided adhesive tape (provided)
- NOTE: If you mount your push-button to a surface made of uPVC (polyvinyl chloride) or metal, please note that the transmission range will be reduced.

**1.3.2. Interior unit (chime)**

1. Drill two holes in the wall at the desired height.
2. Then insert two wall plugs (provided) into the holes.
3. Then, insert two screws (provided) into the wall plugs.
4. You can then hook up the receiver.

NOTE: The screws must not be completely inserted into the wall. You must retain sufficient length from the surface to hold the receiver (chime).

IMPORTANT: The holes have a diameter of approx. 6 mm. The distance between the two holes must be around 75 mm.

**2. Use of the product**

Once you have fitted the batteries to both units, there are just a few more steps before your new doorbell is working.

1. Hold the automatic learning code button for about three seconds, until you hear a beep.
2. Within 15 seconds, press the pushbutton to synchronise the two devices.
3. The units are now synchronised. You can now choose the tune of your choice using the tune button (see diagram).
4. You can adjust the volume of your receiver (chime) using the volume button (see diagram).

- Note:
- If you hear 2 beeps, the connection has not been established in time. You need to start again at step 1.
  - If you wish to add multiple receivers (chimes), you need to repeat the process from step 1.
  - If you hear the doorbell ringing for no reason, this could be caused by interference from other doorbells in the vicinity. If this happens, apply the same reset procedure (See Section 6: Resetting the unit).

**3. Choose the mode which suits you**

Use the "sound and flash mode" button on the side of the receiver (chime) to adapt the mode to your requirements. There are 3 options to choose from:

- Sound only: a beep sounds but the LED does not light up
- LED flash only: the LED flashes but no beep sounds
- Sound and flash: a beep sounds and the LED lights up

**4. Low battery indicator**

If the receiver battery is low, the LED flashes to indicate that the batteries need changing.

**5. Adding a second transmitter**

1. Press the learning code button on the chime once
2. Then press the transmitter button (pushbutton)
3. The receiver (chime) makes a noise to indicate that the new code has been saved.

**6. Resetting the unit**

If you want to disconnect the two devices, hold down the Learning Code button for about 5 seconds. The chime will emit 5 "beeps" to signal desynchronization.

NOTE: Do the same to remove interference due to possible chimes in the area. However, you will need to reconstruct the synchronization between the receiver and the transmitter in accordance with Chapter 2 above: Use of the product.

**7. The receiver (chime) does not ring**

1. Check for discharged batteries in the transmitter or receiver.
2. Check that the batteries are inserted in each unit with the correct polarity.
3. Check that the two units are not too far apart. Bring them as close to each other as possible, making sure that they remain within the operating range (300 m free field).

**8. Safety tips / user tips**

- The receiver is designed for indoor use only
- Do not install the transmitter on a metal surface or UPVC door frames, because that would shorten their operating range.
- Do not expose the units to high temperatures.
- Do not immerse the units in water.
- If you do not plan to use the unit for an extended period, such as when you are on holiday, please remove the battery from the transmitter.
- Incorrect use of the battery could damage nearby items and cause a fire or serious injuries.
- Keep the batteries away from children.
- Recycle used batteries in line with environmental protection regulations.