



0. Video tutorial

We have produced a series of video tutorials to make it easier to understand and install our solutions. You can see them on our [YouTube.com/c/dio-connected-home](https://www.youtube.com/c/dio-connected-home) channel, under Playlists.

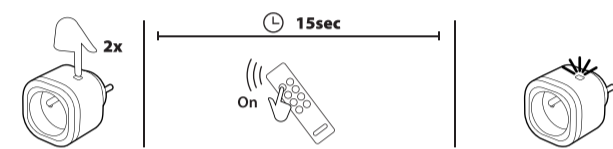
1. Installing the smart plug

Plug your lamp or device into the DiO plug, and the DiO plug into your wall socket. Turn on the power of your lamp or device.

2. Linking the plug with a DiO 1.0 control device

This product is compatible with all DiO 1.0 devices: remote control, switches and wireless detectors.

2.1 Linking the plug with a DiO 1.0 remote control, switch or detector



Connect the DiO plug into the wall socket.

- Press fast twice (double click) into the pairing button situated in the plug, the LED indicator starts to blink slowly yellow.
- Within 15 seconds, press the 'ON' button on the remote control, wall switch or sensor, the plug's LED flashes quickly yellow to confirm the association.

Warning: If you do not press the 'ON' button of the remote control within 15 seconds, the plug will exit the learning mode. You must restart the procedure in order to link the control device with the plug.

The plug can be linked with up to 6 different DiO control devices. When the plug's memory is full, you'll be unable to add a 7th remote, check paragraph 2.2 to remove one remote.

2.2 Deleting the link with DiO control device

If you want to delete a control device from the plug:

- Press twice (double click) into the pairing button of the plug, the LED starts to blink slowly yellow.
- Within 15 seconds, press the 'OFF' button of the desired channel or remote to delete, the LED flashes quickly yellow to confirm the deletion.

To delete all registered DiO control devices:

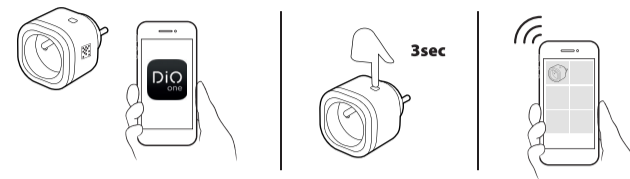
- Press during 7 seconds the pairing button of the plug, until the LED indicator turns purple, then release.

3. Add the plug into the application

3.1 Create your DiO One account

- Download the free DiO One application, available on the iOS App Store or on Android Google Play.
- Create your account following the instructions in the application.

3.2 Connect the plug into the Wi-Fi network



- In the application, select "My devices" and click "+".
- Select "Automation" and then "Connected plug".
- Plug in the DiO plug into the main socket and press the plug pairing button during 3 seconds, the LED indicator flashes quickly red.
- Follow the installation wizard in the application.

Note:

- If the automatic Wi-Fi installation fails, please use the APP mode method to add the device to the application. Check your app for more info.
- In case the Wi-Fi network or password changed, press the pairing button 3 seconds and in the app press long in the device icon. Then follow the instruction in the application to update the Wi-Fi.
- If you want to use the device in another account, please perform a factory reset (see paragraph 4).

3.3 Linking with a voice assistant

- Activate the "One 4 all" service or skill in the app of your Google Home or Alexa voice assistant.
- Enter your DiO one account details.
- All your devices will appear automatically.

3.3 Disable Wi-Fi from the plug

- Press 3 secs on pairing button, release and click twice to disable the plug's Wi-Fi.
- When Wi-Fi is off, the plug's LED will appear purple. Press again 3 seconds, release and double click to turn on the Wi-Fi and to control your plug with your smartphone

Note: The timer created through your smartphone will still be active.

3.4 Plug's light status

- Steady red: plug is not connected to the Wi-Fi network
- Flashing blue: plug is connected to the Wi-Fi
- Steady blue: plug is connected into the Cloud, turns to white after few seconds
- Steady white: plug on (it can be switch off through the app – discreet mode)
- Steady purple: Wi-Fi disabled
- Flashing green: update download

4. Reset the plug

- Press during 12 seconds the pairing button of the plug, until the LED flashes light blue, then release.

5. Use

With a DiO remote control or wireless switch:

Press the 'ON/OFF' button once to switch on/off the lamp or electrical device.

On the plug:

Turn on / off the plug by pressing once the button situated in the plug.

With your smartphone, through the DiO One app:

- Switch on / off from anywhere
- Create a personalised timer: set by the minute and select the day(s) of the week, one time or repeated timer.
- Presence simulation function: select the absence timing and the working period, the plug will turn on/off randomly to protect your home.

By voice:

On your Google Home or Amazon Alexa app, install the service or skill: One 4 All.

6. Troubleshooting

- **The lighting/ device does not turn on when pressing the remote or switch:**
 - Check that the plug is correctly connected to the main socket.
 - Check the polarity of the battery and/or that they are not depleted.
 - Make sure that the lamp or electrical device is switch on.
 - Check that the memory of your plug is not full. You can link maximum 6 DiO remote devices (remote control, switch and/or sensor).
 - Make sure to use a remote control or sensor using DiO 1.0 protocol.
- **The plug doesn't appear into the APP interface:**
 - Check the light status of the plug's LED.
 - Steady red LED: check the status of the Wi-Fi router.
 - Flashing blue LED: check the Internet access.
 - Make sure the Wi-Fi and Internet connection are working properly and that the network is within range of the plug.
 - Make sure the Wi-Fi router is working on 2,4GHz (doesn't work with 5GHz).
 - During the setup, your smartphone should be on the same Wi-Fi network as the plug.
 - The plug can only be added to one account. However the same DiO One account can be used by all family members.
- **Important:** A minimum distance of 1-2 m is necessary between two DiO receivers (module, plug and/or bulb). The range between the plug and the DiO device may be reduced by the thickness of the walls or an existing wireless environment.

7. Technical specifications

Protocol: 433,92 MHz by DiO
 Wi-Fi frequency: 2,4GHz
 EIRP: $\leq 100\text{mW}$
 Transmission range with DiO devices:
 50m (in free field)
 Max. 6 associated DiO transmitters
 Operating temperature: 0 à 35°C
 Power supply: 220 - 240 V - 50Hz
 Max.: resistive load: 3000W / 13A
 Dimensions: 55 x 55 x 75 mm



Indoor use (IP20). Do not use in a damp environment



Alternating current



Protective earth

8. Supplementing your installation

Supplement your installation with DiO solutions to control your heating, lighting, roller shutters, or garden, or to use video surveillance to keep an eye on what is happening at home. Easy, high-quality, scalable and economical...learn about all of the DiO Connected Home solutions at www.chacon.com

Recyclage
 Conformément aux directives européennes DEEE(2002/96/EC) et relative aux accumulateurs (2006/66/EC), tout appareil électrique, électronique ou accumulateur doit être collecté séparément par un système local et spécialisé de collecte des déchets. Ne jetez pas ces produits avec les déchets ordinaires. Consultez la réglementation en vigueur. La marque en forme de poubelle indique que ce produit ne doit pas être jeté avec les ordures ménagères dans aucun des pays de l'UE. Afin de prévenir tout risque sur l'environnement ou la santé humaine lié à la mise au rebut incontrôlée, recyclez le produit de façon responsable afin de promouvoir l'utilisation durable des ressources matérielles. Pour renvoyer votre appareil usagé, utilisez les systèmes de renvoi et collecte ou contactez le revendeur d'origine. Il se chargera du recyclage dans le respect des dispositions réglementaires.

CE CHACON déclare que la mini prise 54905 est conforme aux exigences essentielles et aux autres dispositions pertinentes de la directive RED 2014/53/EU. Le texte complet de la déclaration UE de conformité est disponible à l'adresse internet suivante: www.chacon.com/conformity



Recyclage
 Overeenkomstig de Europese WEEE-richtlijn (2002/96/EG) en de Europese richtlijn inzake accu's (2006/66/EG) moeten alle elektrische en elektronische apparaten en accu's gescheiden ingezameld worden door een lokale instantie die gespecialiseerd is in het verzamelen van afval. Gooi deze producten niet bij het normale huishoudelijke afval. Raadpleeg de geldende regelgevingen. Het symbool van de doorgekruiste afvalcontainer geeft aan dat het in alle landen van de EU verboden is dit product weg te gooien bij het huishoudelijke afval. Om het milieu en de volksgezondheid niet in gevaar te brengen door ongecontroleerd afhandelen van producten, moet dit product op verantwoorde wijze gerecyld worden om het duurzame gebruik van materialen te bevorderen. Voor het inleveren van uw afgedankte apparaat kunt u gebruik maken van de inlever- of inzamelinstanties of kunt u contact opnemen met uw oorspronkelijke verkoper. Deze zal instaan voor de recycling overeenkomstig de reglementaire voorschriften.

CE CHACON verklaart dat apparaat 54905 voldoet aan de eisen en bepalingen van de Radioapparatuurrichtlijn 2014/53/EU. De volledige tekst van de EU-conformiteitsverklaring is beschikbaar op het volgende webadres: www.chacon.com/en/conformity.

Recycling
 In accordance with European WEEE directives (2002/96/EC) and directives concerning accumulators (2006/66/EC), any electrical or electronic device or accumulator must be collected separately by a local system specialising in the collection of such waste. Do not dispose of these products with ordinary waste. Check the regulations in force. The logo shaped like a waste bin indicates that this product must not be disposed of with household waste in any EU country. To prevent any risk to the environment or human health due to uncontrolled scrapping, recycle the product in a responsible manner. This will promote the sustainable use of material resources. To return your used device, use the return and collection systems, or contact the original dealer. The dealer will recycle it in accordance with regulatory provisions.

CE CHACON declares that device 54905 is conform with the requirements and provisions of Directive RED 2014/53/EU. The complete text of the EU declaration of conformity is available at the following Internet address: www.chacon.com/en/conformity